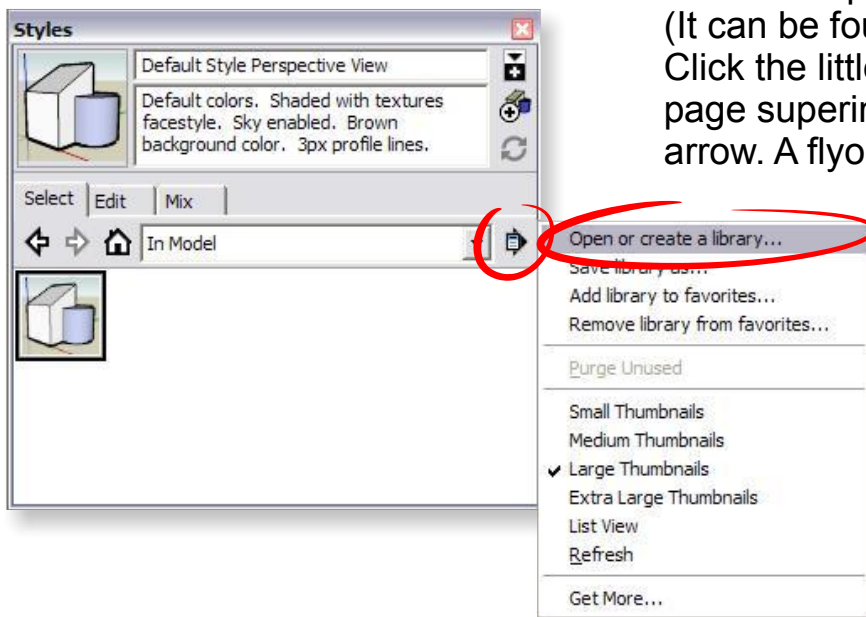


## Downloading FormFont Styles...

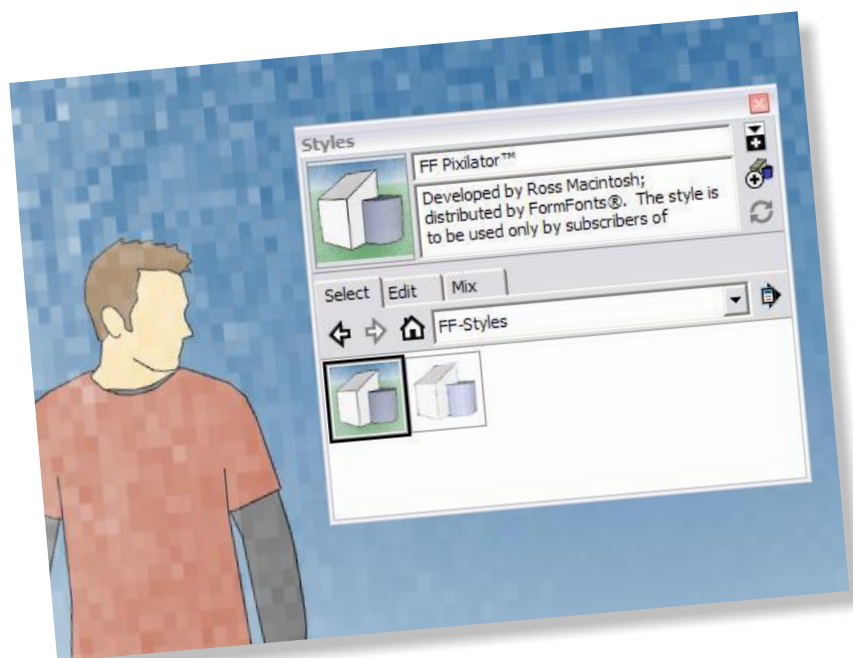
It is recommended that when styles are downloaded from FormFonts that they be saved to a folder. In SketchUp v6 you'll be able to make that folder's styles available for use.



In SketchUp v6 open the Styles Panel. (It can be found in the Window menu). Click the little icon that looks like a page superimposed on a right-pointing arrow. A flyout menu will appear.



In the flyout menu note the choice: "Open or create a library...". It will allow you to specify the folder that has your downloaded FormFont styles. Select the option and browse to select the folder.



In SketchUp you'll then find that folder will be one of the sets of styles available in the panel's dropdown list. Choose it and whatever styles you have in that folder will be available to you.